

Historic, Archive Document

Do not assume content reflects current scientific knowledge, policies, or practices.

62.97

171334

LIBRARY
RECEIVED
FEB 18 1928
U. S. Department of Agriculture

KELLOGG'S NURSERY

Janesville, Wisconsin

ESTABLISHED 1854
74 YEARS OF FAIR DEALING

ANNUAL CATALOG 1928



Felix Crousse Peony
Blooming-Size Roots . . . \$1.00
See Listing of other Peonies on Page 21

1854—1928

Greetings for 1928

A personal acquaintance with the folks we do business with would approach the ideal, but we believe we can be of some assistance in the solution of your fruit problems and the proper planning of your home grounds, and we wish you to help us in this by a frank and free expression of your needs. Write us your problems and we will try and be of service to you. Conditions vary as the seasons come and go, but service is the same every season to help the other fellow.

We practice selling direct to the planter and you know what that means; no middleman; better stock; lower prices; better satisfaction all around.

Yours for more business,

KELLOGG'S NURSERY

JANESVILLE, WISCONSIN



Spirea Van Houttii (Bridal Wreath)

The finest of all shrubs

18 to 24 inches 35c each, \$3.50 per Dozen

2 to 3 feet 50c each, 5.00 per Dozen

3 to 4 feet 75c each, 7.50 per Dozen

Large Specimens, each \$1.00 and up.

General Information

ORDERS are acknowledged at once upon receipt of same, and should you fail to receive an answer in ten days write us again. Always give your name and address and write same very plainly; also give full shipping directions.

Order early before the assortments are broken and thereby avoid disappointment and possible delay.

Orders are shipped in rotation, as far as possible.

We deliver the goods well packed to the transportation companies, after which our responsibility ceases.

WE DO NOT GUARANTEE STOCK TO GROW at the prices we ask. The planter must take that risk and give all stock good care. Where parties wish stock guaranteed to grow we do so but at an advanced price.

GUARANTY.—We exercise the greatest care to have all stock true to name and grade and satisfactory in every way, but it is hereby agreed between the purchaser and ourselves that should any stock not prove true to name, on proper proof, we will replace it or refund the purchase price, but shall not be held for further damage.

CLAIMS.—All claims for shortage, errors, etc., must be made within **TEN DAYS** of receipt of stock or same will not be allowed. Mistakes do occur; but we are always willing to do all we can to correct any errors for which we are responsible. But in making complaints be reasonable. Any claims made for failure of stock to grow or for any other cause that are made after six months or a year has passed will not be considered.

SUBSTITUTION.—When any variety or grade is exhausted we reserve the right to substitute or to put in a smaller grade of trees, unless otherwise stated in the order, but in this case the true name will always be on such stock, and full value sent if smaller grades are used. We furnish 6 at dozen, 50 at hundred and 500 at thousand rates, and allow an assortment of varieties.

TERMS—CASH with order.

REMITTANCES.—Remit by draft upon Chicago or New York, registered letter, money order or express order. Parties sending personal checks must add 10 cents to cover cost of collection.

Plant With Care, and see that the earth is packed firmly about the roots and that all trees planted are thoroughly wet down and well mulched. The ground should be well prepared before planting and given thorough cultivation afterwards.

On receipt of stock dip roots in water and bury in moist ground, except strawberry and raspberry plants, which should not be wet; these should be heeled in in moist soil, open the bundles and spread out, packing the soil firmly to the roots. All stock should be set out as soon as possible.

To parties wishing same, a short list of instructions in regard to planting and cultivation of stock, spraying and formulas will be mailed on request.

Any information not given in this list will be furnished on application.

Owing to the uncertainty of freight shipments we advise all orders to be shipped by express.

Please give preference, if any, by what line you wish order shipped. Send your orders direct to an old reliable firm and save the profit of the middleman. We thank you for past favors and solicit your further orders and all orders sent us will receive our most careful attention.

Parcel Post Shipments

The regulations of the Postoffice Department are such that the shipment of trees by Parcels Post is not practical; packages of more than 84 inches in combined length and thickness are not mailable.

The following weights will be a partial guide in helping to determine the amount of postage necessary.

Strawberry plants: 1 dozen, 1 pound. 50, three pounds. 100, five pounds. 200, seven pounds. 500, eighteen pounds, 1000, thirty pounds.

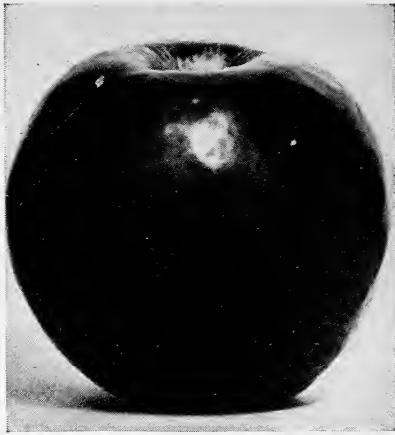
Currants, Gooseberries, Grapes: 1 dozen, eight pounds. 25, seventeen pounds. 50, thirty-three pounds.

Raspberries, black: 1 dozen, 1 pound. 50, four pounds. 100, eight pounds. Red: 1 dozen, one pound. 50, three and one-half pounds. 100, seven pounds. Blackberries, same as black raspberries.

Roses and Climbing Vines: One-half dozen, four pounds. 1 dozen, eight pounds.

Flowering Shrubs 3 to 4 ft. not mailable. 2 to 3 ft., each 3 pounds. Dozen, 30 pounds.

If you are in doubt as to how much to send for postage after you have asked your postmaster for the zone and rate, send enough for the postage or the goods will be sent by express. We will not open small accounts for postage and the surplus over enough to pay postage will be promptly returned.



Fameuse (Snow) Apple

Apples

In the propagation of this fruit we use, as nearly all nurserymen do, the piece-root graft, using a long cion and a short root.

The experience of over half a century has demonstrated that such trees are better for the north than either whole root grafts or budded trees. When the long cion and short root is used the lower half of the cion (which is all below ground except the upper two inches) will nearly always start roots, and these being the same variety as the cion makes the tree hardier and longer lived.

	Each.	Doz.	100
5 to 7 feet	\$0.75	\$7.00	\$50.00
4 to 6 feet50	5.00	40.00
3 to 4 feet35	3.50	30.00

Summer Varieties

*DUCHESS (Russia)

Large, roundish, flattened, light yellow covered with stripes and splashes of dark crimson, firm, sub-acid. August-September.

YELLOW TRANSPARENT (Russia)

Medium, roundish, conical, light yellow, juicy, sub-acid. One of the best early varieties. July-August.

LIVELAND (Lowland Raspberry) (Russia)

Medium to large; smooth waxen white, striped and splashed with fine light crimson; flesh white, often stained with red; fine-grained, crisp, mild, sub-acid. August. One of the earliest.

Fall Varieties

WOLF RIVER (Wis.)

Very large, roundish, irregular, yellow, covered with dark crimson, coarse grained, juicy. October-November.

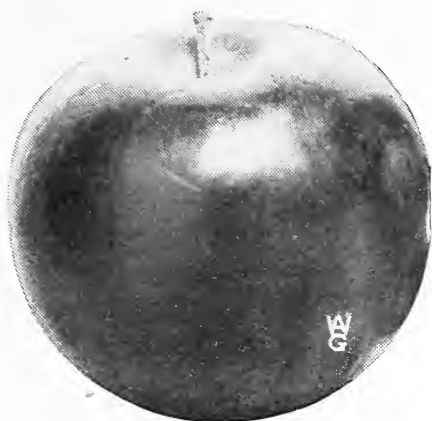
*WEALTHY (Minn.)

Medium to large, roundish, oblate, striped, bright crimson to dark solid red. A very attractive fruit. Very juicy, sub-acid. October-January.

FAMEUSE (Snow)

Medium, roundish, flattened, deep solid red, sometimes striped, juicy, fine-grained, mild, sub-acid. October-January.

Varieties marked thus * are recommended for the extreme north.



McIntosh Red

Winter Varieties

TALLMAN SWEET

Medium, round, whitish-yellow, juicy, mild, sweet. January-March.

SALOME (Ill.)

Medium-sized, roundish, conical, yellow with large light colored dots, mild, sub-acid. January-May.

*N. W. GREENING (Wis.)

Large, roundish, oblong, regular, yellowish-green, firm, mild, sub-acid. February-May.

BEN DAVIS

Large, roundish, conical, light to dark red, striped, coarse-grained, mild, sub-acid. February-May.

McINTOSH RED (Can.)

A choice variety of the Fameuse type. Medium to large, smooth, polished yellow, covered with solid crimson, with heavy blue bloom, flesh snow-white, crisp, very tender, sub-acid. Of the best quality.

A vigorous spreading tree and an annual bearer. December-January.

DELICIOUS (Iowa)

A new variety of finest quality. Fruit large, roundish, conical, yellow with stripes and splashes of bright crimson, with whitish bloom, flesh yellow, fine-grained, juicy, sub-acid, very desirable. December-January.

HARALSON

One of the varieties from the Minnesota Plant Breeding Farm. Tree is of medium size, vigorous, upright grower, and very hardy. Fruit is medium to large size, roundish, slightly flattened, nearly solid red, fine-grained, high quality. January-March.

4-foot trees, 75c each.

Crab Apples

Prices Same as for Apples.

HYSLOP (Origin, America)

Large, roundish, tapering, dark solid red, acid. October.

*VIRGINIA (Iowa)

Medium, roundish, flattened, nearly solid red, very juicy, acid. September-November.

WHITNEY No. 20 (Hybrid; Origin, Ill.)

Large, roundish, oblong, waxed yellow, covered with dark red, juicy, mild, sub-acid. August-September.

Varieties marked thus * are recommended for the extreme north.



Delicious



Hanska Plums

Plums

A most satisfactory fruit, especially for exposed or unfavorable locations. Will grow anywhere, even on poor ground; fruits well even under neglect and is perfectly hardy.

	Each.	Doz.
5 to 7 feet.....	\$0.75	\$7.50
4 to 5 feet.....	.50	5.00

*DeSOTO

Large, oval, light yellow to red, sometimes mottled, juicy, good quality. An early and regular bearer, producing large crops. September. Origin, Wisconsin.

*FOREST GARDEN

Large, roundish, oblong, deep red with yellow tinge, firm, sub-acid. September. Origin, Iowa.

*WYANT

Large, oblong, flattened, purple-red, firm, meaty, good quality. One of the best American varieties. September. Origin, Iowa.

*SURPRISE

Very large, roundish oval, bright crimson, sometimes mottled, vigorous upright grower, an early bearer and a very choice fruit. Flesh firm, meaty, sweet. August. Origin, Minnesota.

Hansen Hybrid Plums

HANSKA

This variety is a cross between the wild plum of the northwest and the Apricot Plum of China (*Prunus Simoni*), which is very popular in the California fruit orchards. It has all the good qualities a plum should have. Large size, bright red with heavy blue bloom; fine for eating from the tree, canning or preserving or jelly. As a shipper it has no equal.

OPATA

A cross between the Dakota Sand Cherry and the Japanese Gold Plum. Vigorous in growth, low spreading habit. Fruit buds form on one-year-old wood and bear freely on two-year-old trees. Size, inch to inch and a quarter; dark reddish-purple with green flesh; good quality, pit small. July 10 to 25.

SAPA

A cross between the Sand Cherry and the Japanese Plum Sultan. Large size, purple with a rich, glossy skin, flesh reddish-purple, with fine quality. July 10 to 25.

Varieties marked thus * are recommended for the extreme north



Waneta Plum

WANETA

The largest and best of the Hansen Hybrids, and should be in every fruit plat. Fruit large to very large (often 2 inches in diameter), red, of finest quality, skin free from acerbity. A cross between the Apple plum and the Terry plum. Tree hardy, a strong grower, productive, and an early bearer.

New Minnesota Plums

4 to 5-foot trees \$1.00 each.

We have only a limited stock of these new varieties of plums and must have orders for them early if you expect to plant any of these choice new kinds.

UNDERWOOD

A vigorous grower; large size; red, early and of fine quality.

RED WING

One of the largest plums, mid-season freestone; red and of high quality.

LORING PRIZE

This plum won the \$1,000.00 prize of the Minnesota Horticultural Society for the best plum for that state. A cross between the Burbank and the Surprise. Hardy as a wild plum; very productive, large size and of fine quality.

MONITOR

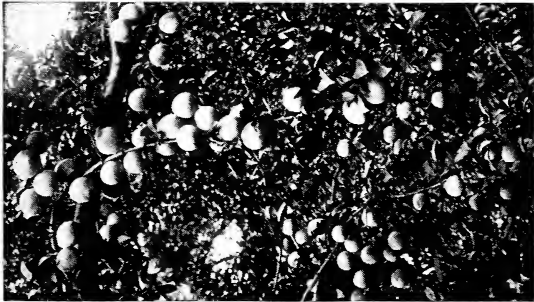
A late mid-season variety, strong grower; fruit large red, firm-fleshed, of good quality.

ELLIOTT

A strong grower; fruit is bright red, of good quality, ripening about September 1st. One of the best late.

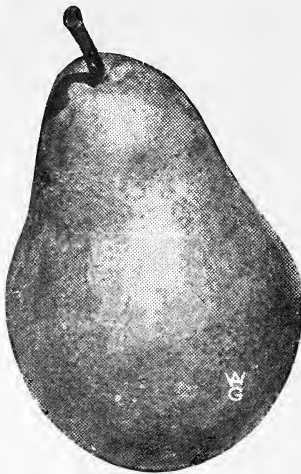
GOLDEN ROD

A vigorous grower; fruit clear yellow, firm flesh, and of good quality. Very promising as a market variety; season late August.



Loring Prize

Bartlett Pear



Pears

5 to 7 feet \$1.00 each; \$10.00 per dozen.

KIEFFER

Large, oval, yellow with light blush, coarse-grained, very hardy. October-December.

FLEMISH BEAUTY

Large, yellow, with reddish-brown tinge, juicy, sweet. September

BARTLETT

Large, oblong, yellow, fine-grained, juicy, sweet. September.

DUCHESS DE ANGOULEME

Very large, oblong, greenish-yellow with streaks and spots of russet. Flesh fine-grained, juicy, very good. July.

CLAPP'S FAVORITE

Large size, pale yellow marbled and splashed with crimson and russet. Fine-grained, juicy, very good. Hardy and is grown over a wide area. September.



Montmorency Cherries

Cherries

The supply of cherry trees this season is not plentiful. Prices are high but there will not be anywhere near enough trees to supply the demand. Order early if you wish any cherry trees.

	Each.	Doz.
4 to 6 feet.....	\$1.50	\$15.00
3 to 5 feet.....	1.25	12.50

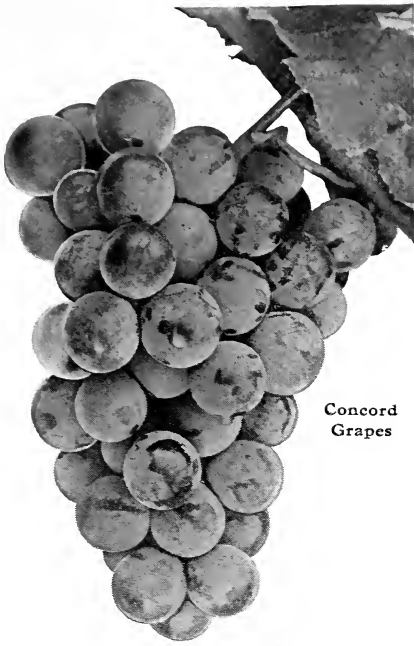
***MONTMORENCY**

Large, bright crimson, very juicy, strong upright grower and one of the best late varieties. July.

***EARLY RICHMOND**

An early variety of extreme hardiness, bearing large annual crops of medium-sized fruit. Light to dark red, very juicy. June.

Varieties marked thus * are recommended for the extreme north.



Concord
Grapes

Grapes

Two-year-old vines 35c each; \$3.50 per dozen.

CONCORD (Black)

Too well known to need much description; the best all-around grape grown; very hardy, vigorous and productive; bunches large, compact; berries large, juicy, buttery and sweet. Succeeds well almost everywhere.

WORDEN (Black)

A seedling of Concord. A vigorous, hardy vine, early and productive; bunch large and compact; berry round, black, with blue bloom, pulpy, juicy and very pleasant. Ripens a week to ten days ahead of Concord.

MOORE'S EARLY (Black)

Hardy and prolific; bunch large and compact; berry round, black with heavy blue bloom; quality better than Concord; ripens two weeks ahead of Concord. A good market variety.

CAMPBELL'S EARLY (Black)

A strong, vigorous and hardy variety; ripens early; very productive; berry large, black with blue bloom; tender, sweet and rich. A long keeper and ships well. A good market variety.

BRIGHTON (Red)

Vigorous and hardy; bunch medium to large; berry large, flesh tender, rich, sweet and of fine quality. Ripens with Concord.

DIAMOND (Moore's Diamond) (White)

Vigorous and productive, free from mildew. Bunch large and compact and somewhat shouldered; berry medium size, greenish-white, nearly transparent, tender, juicy, sweet and rich. Ripens ten days before Concord.

AGAWAM (Rogers, No. 15) (Red)

Bunch large, compact, shouldered; berry large, dark red, tender, juicy and of finest quality. A week later than Concord.

Inspection—Fumigation

Entomologist's Certificate of Inspection will accompany all shipments. We are prepared to fumigate with Hydrocyanic Acid Gas, and will do so when requested, or where State laws require it.



Downing Gooseberries

Gooseberries

35c each; \$3.50 per dozen.

DOWNING

Strong, upright, vigorous grower, very productive, medium size, thin skin, bright green and of fine quality. The standard market variety.

CARRIE

A new variety introduced by Hon. Wyman Elliott of Minnesota. A strong, vigorous grower, large size, of fine quality and very productive. Should be in every home garden.



Perfection Currants

Currants

35c each; \$3.50 per dozen.

WILDER

A standard variety largely grown for market. Bunch and berry very large, dark rich red and good quality. Always brings the top price.

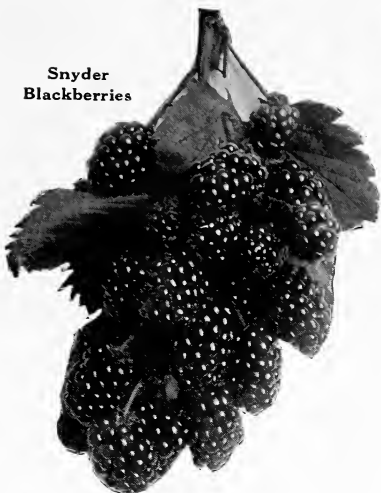
WHITE GRAPE

A large sized standard white variety of finest quality.

PERFECTION

Large size, bright red, very productive and of fine quality, rich, mild, sub-acid; plenty of pulp and few seeds. Vigorous grower with large healthy foliage; not as upright in growth as many of the currants. Mid-season.

Snyder
Blackberries



Blackberries

Each 10c; dozen \$1.00; 100 \$5.00.

SNYDER

Strong, vigorous grower and very hardy; medium to large size, good quality, very productive and ripens early.

BRITON (Ancient Briton)

A standard market variety. Fruit large, juicy, fine quality; strong grower, producing profitable crops. Season late.



St. Regis Raspberries

Raspberries

Our fields have been twice inspected and we are shipping only such plants as are classed "mosaic free."

Each 10c; dozen \$1.00; 100 \$5.00, except as noted.

*CUMBERLAND

The standard market variety. Strong, upright, vigorous grower, very productive. Berries very large, firm, black and of finest quality. Ripens second early to mid-season.

*PLUM FARMER

One of the most profitable market varieties as it ripens the crop in a very short time. Berries are large size, firm, thick meated, black with a bloom similar to the Gregg. Very attractive when ready for market. Ripens just before Cumberland.

ST. REGIS

The best of the everbearing varieties and has real merit where two pickings are desired. Bush is hardy, a strong grower and spring set plants will bear the latter part of the same season. Berries are bright crimson, large size, firm and of fine quality. Price, same as Latham.

LATHAM (Minn. No. 4)

This new variety is a valuable addition to our list of hardy fruits. Plant is a strong, vigorous grower with promise of lots of vitality to mature the crop of fruit. Berries are large size, bright red, firm, of the best quality, and will make a shipper up to 300 to 500 miles. We have grown it for some time and consider it worthy of a place in every home garden and for commercial purposes. Price, \$1.00 per dozen; \$5.00 per 100; \$40.00 per 1,000.

Varieties marked thus * are recommended for the extreme north.



Senator Dunlap

Strawberries

The queen of all fruits. Probably there is no other crop that yields as much profit as Strawberries on a small area. However, we would not advise anyone to plant Strawberries with the idea of getting rich quickly; with proper soil, good care, plenty of work, and a knowledge of how to grow and care for them, Strawberries will be a profitable crop to grow. Everyone ought to have all the fresh Strawberries they can use and the way to get them is to plant a plot large or small as your needs indicate and you will receive large returns on the time and money invested.

COOPER (Per.)

A new variety of excellent promise; plant is large to very large, with roots reaching down 15 to 20 inches in porous soils; crowns are large and vigorous carrying many fruit stems; berries are very large, firm and of good color, solid to the center with no hollow berries. Quality is of the finest. 18 to 30 berries will fill a quart box. Very productive, mid-season to late. **THE COMING COMMERCIAL BERRY. Price, 35c per dozen; \$1.50 per 100.**

PREMIER (Per.)

The best large sized early berry grown. It has **SIZE, COLOR, QUALITY, and PRODUCTIVENESS**, and ripens early. Should be in every plantation. **Price, 35c per dozen; \$1.50 per 100.**

*SENATOR DUNLAP (Per.)

Medium to large, conical, dark red, very firm and a good shipper. A vigorous grower and usually makes too many plants for best results, unless growth is restricted. It is as productive as Warfield, berries are better colored and a third larger. The best market variety and no list is complete without it. Succeeds over a wider range of country than any variety we have grown in forty years; is our main market variety. **25 plants 50c; 100 for \$1.25; \$7.00 per M.**

DR. BURRILL

A valuable new variety. We believe it will displace even the Dunlap for main market berry. Large to very large, dark red to the center and of finest flavor. Firm, good keeper and ships well. Plant upright, bushy grower, vigorous, hardy and very productive. Our supply of plants is not large and orders will be booked only by the dozen or hundred. **25 for 50c; 100 for \$1.25.**

WARFIELD (Imp.)

Medium size, roundish, conical, dark red, firm and of first quality, mid-season. A vigorous market variety; perhaps more largely grown than any other. This and Senator Dunlap make a fine pair. Produces the best crops on a soil that is not too light and should have a soil that is right in fertility and full of humus. A small plant but has wonderful vitality and productiveness. **25 for 50c; 100 for \$1.25; \$7.00 per M.**

BOOSTER (Per.)

Mid-season to late. Large size; round, smooth, bright crimson; a very promising variety. **Dozen, \$1.00.**

PEARL (Per.)

Late. Large to very large; dark red; firm and a good shipper. One of the latest. **Dozen, \$1.00.**

Varieties marked thus * are recommended for the extreme north.



Progressive

See Back Cover for full color illustration of Mastodon

Everbearing Strawberries

We have been growing this class of strawberries for the past twenty years and have tried about all the varieties that have been placed on the market. Out of the thirty or more kinds we have grown we are retaining three as being worthy of general planting.

In growing the Everbearers the following is the most improved method of culture: Plant as early in spring as the conditions of soil and weather will permit, keep all bloom removed from the plants until about one month before you wish the fruit to begin to ripen. Allow the plants set to produce from four to eight runners and when these are rooted keep all other runners cut off as soon as they appear. You will then have a hedge row or half matted row system and if clean culture is given and with good fertile soil you will get lots of berries. If you wish fruit do not let them make too many plants. A bed of the Everbearers after having fruited the year of planting should be well covered and can be carried over to fruit the following June if desired or the fruit stems can be kept off the second season until July 15th, and they will bear again in the fall. Right varieties, rich soil and good culture will win with the Everbearers, but the greatest of these is GOOD culture.

CHAMPION (Per.)

A new everbearing variety that is making a place for itself because of its size, quality and productiveness. Yields twice as much as Progressive, equal in quality and appearance, and a much better plant maker. Reports have been received by the originator, Mr. Lubke, of yields of over \$2,000.00 per acre from this variety. **Price, 50c per dozen; \$2.00 per 100.**

PROGRESSIVE (Rockhill's No. 16) (Per.)

Originated by Harlow Rockhill of Iowa and said by him to be his best variety among the many he has produced. Large size and fine quality. Productive. **Price, 50c per dozen; \$2.00 per 100.**

MASTODON (Per.)

A new everbearer of great value. Large to very large, regular shape and of good quality. Plants are very large and a vigorous grower making a good supply of plants. Fruit stems are strong and of medium length holding fruit well off the ground. Very productive. **Price, 50c per dozen; \$2.50 per 100. Illustrated on Back Cover.**

Asparagus—Rhubarb

75c per bunch of 25; \$2.00 per hundred.

CONOVER'S COLOSSAL

An old standard variety well known everywhere. Large size, rapid in growth and of good quality.

COLUMBIAN MAMMOTH WHITE

A market variety that is very desirable where the market demands a white asparagus. Large size, rapid, vigorous grower and very prolific.

RHUBARB

Each 20c; dozen \$1.50; 100 \$12.00.
Victoria and Mammoth Linnaeus.



The two trees on the curb are *Catalpa Bungei*

Ornamental Trees

	Each.	Doz.
5 to 6 feet.....	\$0.50	\$5.00
6 to 8 feet.....	.75	7.50
8 to 10 feet.....	1.25	12.50
10 to 12 feet.....	2.00	20.00

ELM (American White Elm)

The noble, spreading, drooping tree of our native woods. The best tree for shade for lawn, park or street planting.

CATALPA (Catalpa Speciosa)

A native southern tree. A rapid growing tree with large heart-shaped leaves and pyramidal clusters of white flowers, often a foot long. Blooms late in July.

CAROLINA POPLAR

One of the best of the poplars. Is probably the most rapid grower among the shade trees; rather upright in growth but spreads enough to make a symmetrical tree; will grow on any kind of soil, light or heavy, high or low; will thrive where others fail to live. Grows very rapidly and will give shade in a short time. Holds leaves till late in the fall.

SILVER MAPLE (Soft Maple)

A well known hardy native tree, hardy, rapid in growth, producing quick shade. More subject to insect attacks than most of the other shade trees.

NORWAY MAPLE

A large, handsome tree, broad, deep foliage, compact growth, grows to large size. Valuable for park, lawn and street planting. Price, 6 to 8 feet \$2.00; 8 to 10 feet \$3.00 each.

LINDEN (American Basswood)

A rapid growing, large, beautiful tree. Flowers very fragrant. Can supply in 4 to 6 feet at \$1.00 each; and 6 to 8 feet at \$1.50 each.

CATALPA BUNGEI

2-year heads. A very popular ornamental tree. \$3.00 each.

TEAS' WEEPING MULBERRY

A graceful ornamental tree for lawn planting. \$4.50 each.



Hydrangea Arborescens

Shrubs

18 to 24 inches, 35c each; \$3.50 doz.

2 to 3 feet, 50c each; \$5.00 doz.

3 to 4 feet, 75c each; \$7.50 doz.

Larger sizes from \$1.00 each up.

SPIREA VAN HOUTTII (Bridal Wreath)

Large white flowers, early bloomer. "A snow bank of bloom." The finest of all shrubs.

SPIREA FROEBELI

A low-growing bush with light red blossom. Valuable to plant in front of the higher-growing shrubs such as *Hydrangea Arborescens*, *Bridal Wreath*, etc., making a pleasing contrast.

SPIREA COLOSA ALBA

A dwarf spirea with white flowers.

BERBERIS THUNBERGII

Dwarf in growth, with graceful drooping branches. Yellow bloom, scarlet fruit, foliage green, changing to scarlet and gold in the fall.

SYRINGA (Alba Grandiflora)

A large, vigorous, upright growing shrub. Flowers white, blooms very freely in June.

LILACS

Purple, white and variegated.

SNOWBALL

A well known shrub, large white flowers latter part of May.

HONEYSUCKLE (Bush)

Red and white. Blooms in June.

GOLDEN ELDER (Sambucus Aurea)

Beautiful golden-yellow foliage, fine for single specimens or used in massing with other shrubs or alone.

SNOWBERRY (Symphoricarpos Alba)

Vigorous and hardy. Berries white.

INDIAN CURRANT (Symphoricarpos Rubra)

Similar to above; berries red in color.

WEIGELA ROSEA

Blossoms in June, large trumpet-shaped flowers of rose color that fade to nearly white. Very desirable.

WEIGELA VARIEGATED

Resembles *Weigela Rosea*; has variegated green and white leaves. Very choice.

WEIGELA EVA RATHKA

Similar to *W. Rosea*, but has very fine dark rich red blossoms. Very choice.

HYDRANGEA ABORESCENS

"Hills of Snow." A new shrub but one that will give very satisfactory returns. Flowers of large size; pure white, similar in shape to the *Snowball* but much larger. Blooms freely from June to August.

HYDRANGEA P. G.

A fine shrub, blooms August and September, large white flowers, pyramidal shape, often a foot long. This can be pruned into tree form and will make a very large shrub, often upwards of eight feet in height.

FLOWERING ALMOND

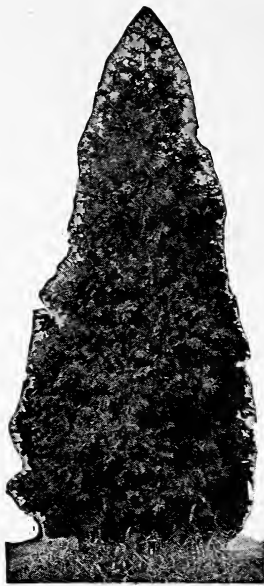
Pink. A very desirable ornamental shrub. \$1.00 each.



HONEYSUCKLE



Flowering Almond



American Arbor Vitae

Evergreens

To this department we are devoting more time and space each year. We realize the value of evergreens for the decoration of home grounds, parks, etc. Our stock is not large but on early orders we can secure the specimens wanted if we do not have them in stock. Order early.

AM. ARBOR VITAE (White Cedar)

The leading evergreen used for hedge purposes and specimen planting. 12 to 18 inch \$1.75 each; 18 to 24 inch \$2.00 each; 2 to 3 feet \$3.00 each.

ARBOR VITAE PYRAMIDALIS

This grows in a close, narrow pyramidal form. Very desirable for lawn planting. 12 to 18 inch \$3.00 each; 18 to 24 inch \$3.50 each; 2 to 3 feet \$4.00 to \$5.00.

ARBOR VITAE GLOBOSA

A very attractive Arbor Vitae with a round, globe-shaped head. Sizes given are diameter of the head. 10-inch head \$2.50 each; 15-inch head \$3.00 each; 18-inch head \$5.00 each.



Juniper Virginiana (Red Cedar)

EVERGREENS, Continued

NORWAY SPRUCE

The well known tree used for windbreaks and specimen planting. A quick-growing hardy tree and thrives over a wide territory. 12 to 18 inches \$1.00 each; 18 to 24 inches \$2.00; 2 to 3 feet \$2.00 to \$3.00, according to the specimen.

JUNIPER VIRGINIANA (Red Cedar)

A very desirable tree for lawn or bedding use. 18 to 24 inches, \$3.00 each; 2 to 3 feet \$4.00 each.

JUNIPER SABINA

A low spreading grower, rarely over three feet in height, but often 6 to 8 feet across. Sizes are diameter of head. 12 inches \$2.50 each; 15 inches \$3.50 each; 18 inches \$4.50 each.



Black Hills Spruce

BLACK HILLS SPRUCE

A very hardy tree, very bushy, compact in growth. Does not grow as large as the Norway Spruce. 12 to 18 inches \$2.00 each; 18 to 24 inches \$3.00 each.



Colorado Blue Spruce

COLORADO BLUE SPRUCE

The choicest of all the evergreens. A rich silver-blue in color. 18 to 24 inches \$5.00 each; 2 to 3 feet \$7.50 each.

MUGHO PINE (Dwarf Pine)

A choice low-growing tree. Dwarf in habit; never grows very high but spreads out instead. 8 to 10 inches \$2.00 each; 10 to 12 inches \$2.50 each; 18 inches \$4.00 each.



Gruss an Teplitz



Frau Karl Druschki

Roses

Two-year bushes, 18 to 24 inches of wood 75c each; \$7.50 per dozen.

Hybrid Perpetuals

FRAU KARL DRUSCHKI (New)

A pure paper-white, large sized and free flowering. The bloom is perfect in form on fine, long stems, and during the past season in our Rose Gardens bloomed continuously from June till November.

GRUSS AN TEPLITZ

Deep, rich velvety crimson-red. Constantly in bloom. One of the best dark roses.

SOLEIL D'OR

A cross between Persian Yellow and Antoine Ducher. It is a fine hardy outdoor Rose, showing much the same character as the Hybrid Perpetuals. Especially valuable because of its rare color; gold and orange-yellow, varying to ruddy gold suffused with Nasturtium-red.

GEN. JACQUEMINOT

Deep red, free-bloomer, fragrant, large size. One of the finest.

M. P. WILDER

Deep red. One of the finest red roses. Large size and full. Free bloomer.

ULRICH BRUNNER

Bright red, large size, fragrant. Very fine.

MADAM PLANTIER

White, large size and very full, very hardy.

MAGNA CHARTA

Bright pink suffused with carmine, large size. Strong, upright grower, vigorous and healthy. One of the best.

PAUL NEYRON

The largest rose in cultivation, blooms often measure five inches in diameter; strong, vigorous grower. Pink. Very fresh and attractive.



Ulrich Brunner



Paul Neyron



Rosa Rugosa Alba

ROSES—Hybrid Perpetuals, Continued

HANSA

A very choice Rugosa. Free-bloomer. Very hardy and needs no protection. Flowers are very large, double, and a bright showy red. Very desirable. \$1.00 each.

ROSA HUGONIS

A new variety of great promise. A strong, vigorous grower, free-bloomer. Flowers are golden-yellow. Very attractive. \$1.50 each.

ROSA RUGOSA ALBA

Bright shiny green foliage, flowers pure white, blooms in clusters. Very hardy; needs no winter protection.

ROSA RUGOSA RUBRA

Same as above. Flowers single, rosy-crimson.

PERSIAN YELLOW

An old favorite, and still one of the best yellow Roses for the yard. Deep golden-yellow, semi-double.

Moss Roses

HENRI MARTIN

Rich glossy crimson; large globular flowers.

PRINCESS ADELAIDE

Soft velvety-pink, large blooms. Very hardy. One of the best.

Climbing Roses

DOROTHY PERKINS

Beautiful shell-pink, full and double, large size for cluster rose. Closely resembles the Crimson Rambler.

CRIMSON RAMBLER

The most beautiful crimson climbing rose. Flowers in large pyramidal clusters of from 30 to 40 blooms, strong grower and hardy.

QUEEN OF PRAIRIE

Pink, large, full, vigorous grower and blooms freely.

SEVEN SISTERS

Dark reddish-pink changing to white as the petals fall. Very strong grower and profuse bloomer. Very hardy.

PAUL'S SCARLET CLIMBER

Bright crimson, semi-double, in clusters. New, valuable.



Paul's Scarlet Climber

Phlox

TALL CHOICE PERENNIAL VARIETIES.

OUR PLANTS ARE WELL GROWN AND STRONG.

Hardy Phlox have long been so popular that it is rare to find a garden without a collection of at least a few of the many beautiful varieties now in cultivation. No plant is more attractive or more useful, either for the adornment of the garden or for supplying cut flowers.

To those not familiar with these plants we desire to say that they are perfectly hardy and succeed well in almost any kind of soil. Small plants are usually selected to start with, as they increase rapidly in size, not in height so much, which is from 2 to 3 feet, but in the number of flower stems, which multiply year after year.

Assorted colors, 25c each; \$2.50 dozen.

BRIDESMAID. Vigorous grower. White with crimson eye.

R. P. STRUTHERS. Cherry-red, suffused with salmon.

MISS LINGARD. Large and very early; waxy white with lilac eye.

MME. BEZANSON. Choice, best crimson.

WHITE QUEEN. Large, strong grower; pure white.



Phlox last 4 or 5 days in water

Iris

Foliage—Rich, evergreen color; makes splendid dense borders.

Bloom—Large, fragrant, useful; delicate tints; exquisite patterns.



Iris are magnificent

The "Fleur de Lis" of France, and well-beloved favorite in every old-time garden. It is this diversified type which lends its flower beauty and fragrance to our annual Memorial day, at a time when little else has come into bloom. Although capable of establishment in any kind of soil, they will attain greater perfection of growth and flowering in a damp or marshy situation. The exquisite, haunting fragrance and delicacy of tinting in their flowers make their spring advent a source of keenest pleasure, and their departure—all too soon—an equally keen regret.

Dark Blue, White and Blue, Straw Color, White and Yellow, Light and Dark Purple. Price, 25c each; \$2.50 dozen.

Lilies

Lilies 50c each.

LEMON LILY

Well-known reliable sort.

THUNBERGI

Funnel-shaped flowers of rich buttercup-yellow. July.

UMBULATUM

An improved Tiger lily carrying 4 to 10 blooms. Very choice. August.

YUCCA FILAMENTOSA

Large spikes of creamy-white, bell-shaped flowers. June. **50c each.**

Peonies

PLANT MORE PEONIES.

The Peony, of all the hardy outdoor plants, is one of the oldest and best known, and in the improved varieties now obtainable, makes a display of gorgeous blooms in June of every color, many of which are fragrant and all of large size.

An important point to observe in the planting of Peonies is not to plant too deeply. The roots should be placed so that the crowns are covered with 2 inches of soil. Too deep planting and poor soil frequently cause shy blooming.

The increasing demand for Peonies has been quite noticeable the past few years and we are increasing our plantings every year.

Planting.—Best results are secured by planting during September or October; but early spring planting will give good results if done before growth has started. We can supply the following varieties at **\$1.00 per root of 3 to 6 eyes**, which is the best sized root to plant.

AMERICAN BEAUTY

A mid-season pink; fragrant.

AVALANCHE

Large, milk-white; late, fragrant, very choice.

BARONESS SCHROEDER

Delicate pink, changing to white, late, very fine. **\$1.50 each.**

COURONNE d'OR

Pure white, mid-season to late, fine.

DELICATISSIMA

Very early, pink, free-bloomer, fine commercial sort.

DUC De WELLINGTON

Large; white, with sulphur center; mid-season. Fine for cut flowers.

DUCHESS De NEMOURS

Sulphur-white; second early; very choice.

EDULIS SUPERBA

Very early; deep pink; strong grower; free-bloomer.

FELIX CROUSSE

A mid-season deep rose-red, strong grower, a free-bloomer. Many rate this the BEST red.

FESTIVA MAXIMA

An early white, flecked with carmine; large size. Very dependable.

JAMES KELWAY

A mid-season white changing to milk-white with base of petals tinged with yellow. Choice. **\$1.50 each.**

La PERLE

Soft pink, changing to white; mid-season.

La TULIPE

Cream-white. Late. Fine.

MADAM d'AREMBERG

A very choice mid-season dark red variety from Holland not widely known in this country; very full. Stems are stiff and strong; will not go down in storms. **\$2.00 each.**

MARIE LEMOINE

A late variety of large size, white, valuable for cut flowers.

MIDNIGHT

Very dark red, mid-season, large flowers, stiff stems.

MODELE de PERFECTION

Large, compact, flesh pink to bright rose, strong stems, mid-season. Best of the pinks.

MODESTA GEURIN

Large, compact, rose-pink, mid-season, free-bloomer; very fragrant.

OFFICINALIS RUBRA

Very early, old-fashioned red; large, valuable.

PASTEUR

Large delicate shell-pink; mid-season; very fine.

QUEEN VICTORIA

Large, creamy-white, medium early. An old variety.

RUBRA SUPERBA

Red, mid-season to late, fragrant, large. Very fine.

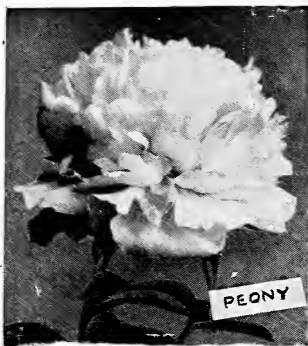
RUBRA TRIUMPHANS

Large; dark purplish-crimson; a strong grower and a free-bloomer. The best of the mid-season reds.

In addition to the above we can supply about fifty other varieties, ranging from very early to very late, and in all shades of colors. We will be glad to send our special PEONY LIST on request.

RED, WHITE AND PINK

Our selection of varieties at **50c each.**



Marie Lemoine Peony



American Ivy



Honeysuckle

Climbing Vines

50c each; \$5.00 dozen.

SCARLET TRUMPET HONEYSUCKLE (Climbing)

Red, strong, rapid grower, blooming all summer.

BITTER SWEET

One of the best native climbing vines, a vigorous grower and free bloomer, and very ornamental, even in late fall with bright red berries, which it retains all winter; needs no protection.

JAPAN IVY

One of the hardy climbers, clings to the smoothest surface.

AMERICAN IVY (Virginia Creeper)

Native climber too well known to need description.

AKEBIA QUINATA

A perfectly hardy, fast growing Japan vine, with magnificent foliage, producing flowers in large clusters of chocolate-purple color, possessing a most delicious perfume; unsurpassed for covering trellises and verandas, the foliage never being attacked by insects.

WISTERIA

One of the best climbing vines. Very hardy.

Clematis

Two-year, each 75c; dozen \$7.50.

In planting the Clematis be careful to put them in quite deeply even to 4 to 6 inches below the surface. This will often prevent loss by the breaking off of the vine just where it leaves the root. Also be sure that they are well firmed in to prevent drying out.

C. JACKMANII

A very profuse blooming variety with flowers from four to six inches in diameter, of an intense violet-purple color borne successfully in continuous masses on the summer shoots. The very best sort for general planting.

C. HENRYII

Fine bloomer; flowers large, of a beautiful creamy-white, consisting generally of from six to eight petals. June to October.

C. MADAME EDOURD ANDRE

Flowers large, of a beautiful bright velvety-red, very free flowering and continuous bloomer.

C. PANICULATA

A great novelty. One of the most desirable, useful and beautiful of hardy garden vines, a luxuriant grower, profuse bloomer with fine foliage. Flowers pretty and fragrant, produced in profusion in late summer; white.



Clematis Paniculata



Wisteria

Special Collections

Suggested for those who are not familiar with just what is needed for home decoration or garden planting. You can order these with perfect assurance that they are first grade stock, listed in this catalog, and will please you. The quantity permits us to pass a saving on to you.

No. 1. Berries

100 Dunlap and 12 Progressive Strawberries. 12 Latham Red Raspberries.

POSTPAID FOR \$1.50.

No. 2. Peonies

Six named varieties—one each: Rubra Officinalis, Edulis Superba, Delicatissima, American Beauty, Festiva Maxima and Rubra Triumphans. All 3 to 6 eyes, blooming size. A \$6.00 value.

POSTPAID FOR \$4.00.

No. 3. City Garden Collection

50 Dunlap and 12 Progressive Everbearing Strawberries; 12 Latham Red Raspberries; 6 Cumberland Black Raspberries; 6 Snyder Blackberries; 50 Asparagus; 3 Rhubarb or Pie Plant; 3 Grapes—one each of Concord, Worden and Brighton; 3 Wilder Currants; 2 Downing Gooseberries. A splendid collection that will give results. A \$7.28 value.

BY EXPRESS, \$5.00.

No. 4. Home Orchard Collection

Sixteen Apple trees—2 each of the following eight named varieties: Yellow Transparent, Duchess, Wealthy, Snow, McIntosh, Delicious, N. W. Greening and Whitney Crab; 1 Waneta Plum; 1 Bartlett Pear; 2 Cherries, one early and one late. A \$10.65 value.

BY EXPRESS, \$8.50.

No. 5. Home Landscape Collection

6 Bridal Wreath Spirea; 3 Hydrangea P. G.; 3 Hydrangea Arborescens; 2 Syringa; 2 Honeysuckle; 2 Spirea Frobelli; 6 Phlox, assorted; 6 Iris, assorted; 2 Lilies; 1 Yucca Filamentosa; 3 Peonies—one each of three different colors, all blooming size. A \$13.50 value.

BY EXPRESS, \$10.00.

No. 6. Farmers' Garden Collection

6 Wilder Currants; 6 Downing Gooseberries; 8 Grapes—Concord, Worden, Diamond, Brighton; 100 Asparagus; 6 Pie Plant; 25 Snyder Blackberries; 25 Latham Red Raspberries; 25 Cumberland Raspberries; 175 Dunlap and 12 Progressive Everbearing Strawberries; 12 Mastodon Everbearing Strawberries. A \$15.70 value.

BY EXPRESS, \$13.00.

No. 7. Farm Orchard Collection

25 Apples, assorted; 3 Plums; 3 Pears; 4 Cherries; 6 Grapes; 6 Currants; 2 Gooseberries; 50 Raspberries, red and black. All first class stock and sure to please. A \$26.85 value.

BY EXPRESS FOR ONLY \$20.00.



It is a very easy matter for a farmer to raise all the fruit his family can use, but hardly one out of 20 does it

MASTODON EVERBEARING STRAWBERRIES



*Just think of it—2 Crops a Year
Dozen Plants 50c; 100 for \$2.50
See Page 13 for Details*

KELLOGG'S NURSERY
JANESVILLE, WISCONSIN

Visitors Welcome

Correspondence Solicited